

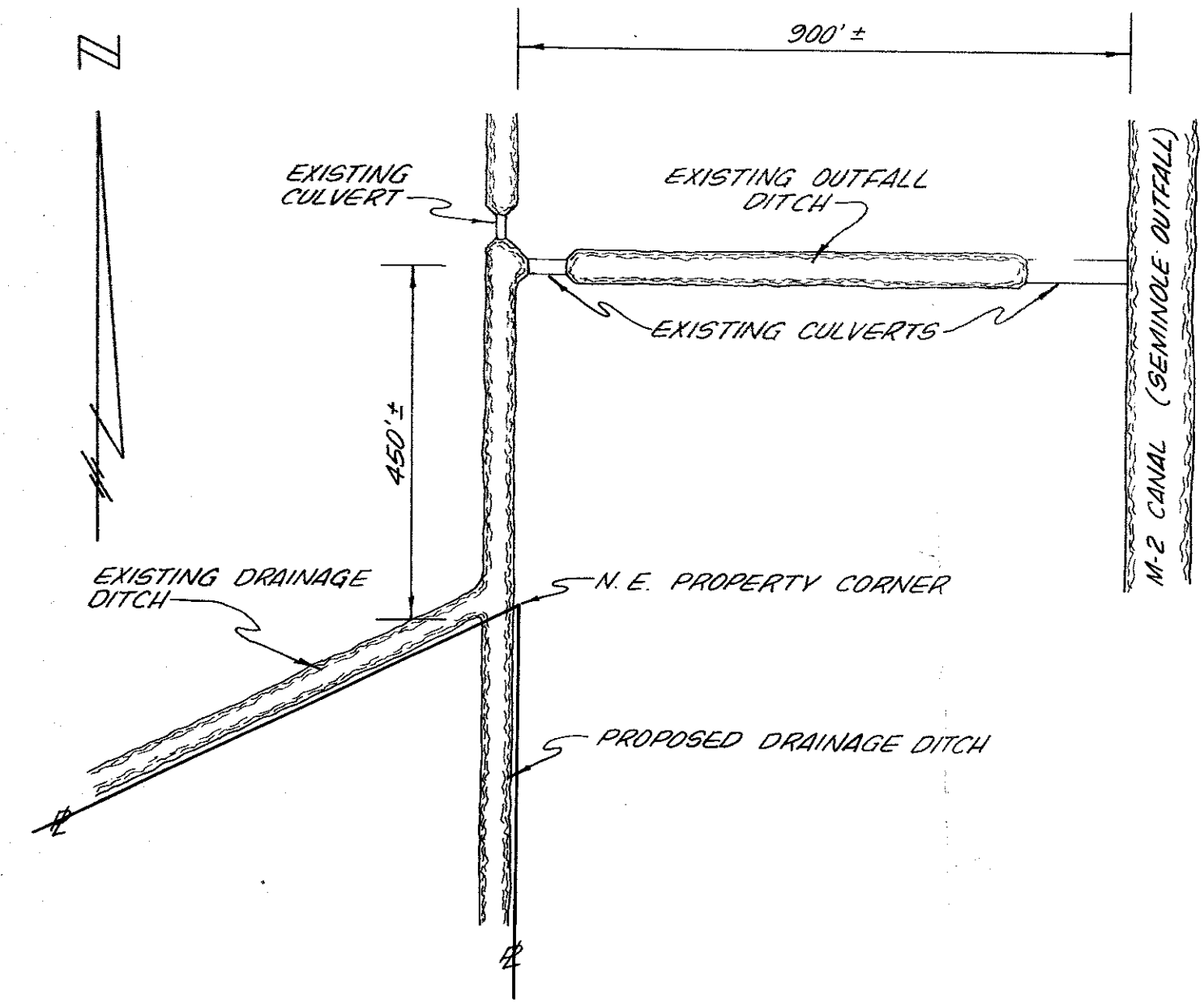
NOTE: By previous agreement between Indian Trail Ranch (original owners of subject property) & Seminole Water Management District this site is allowed to discharge into the M-2 Canal (seminole outfall).

SOIL CLASSIFICATION

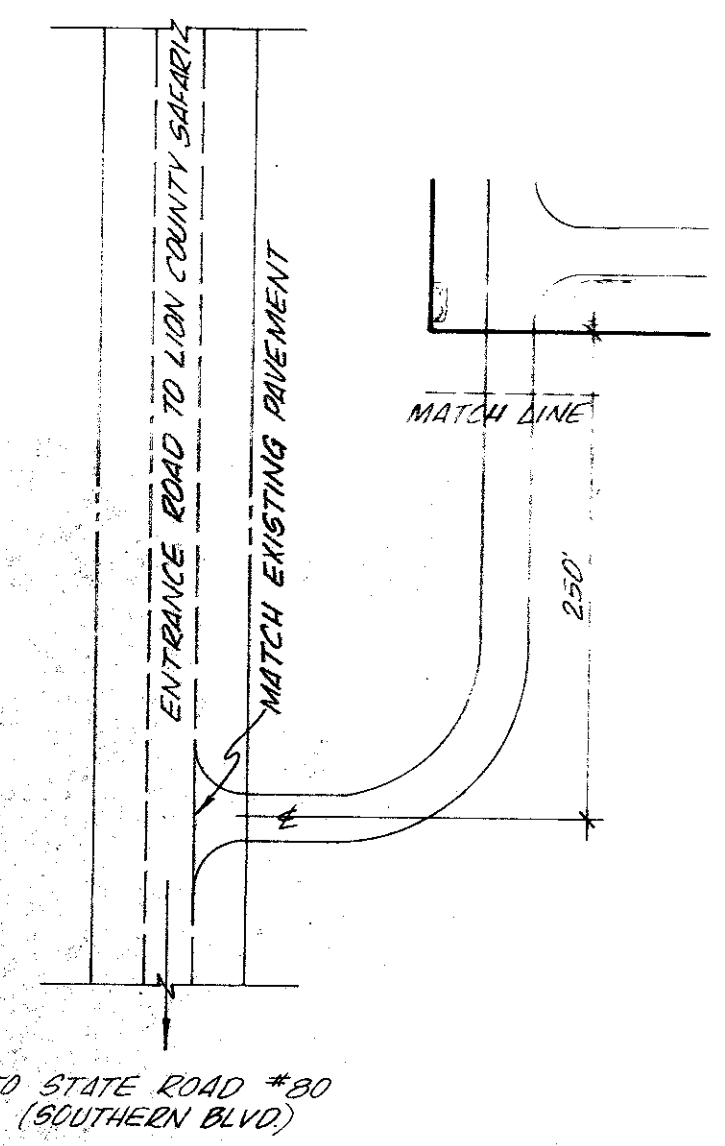
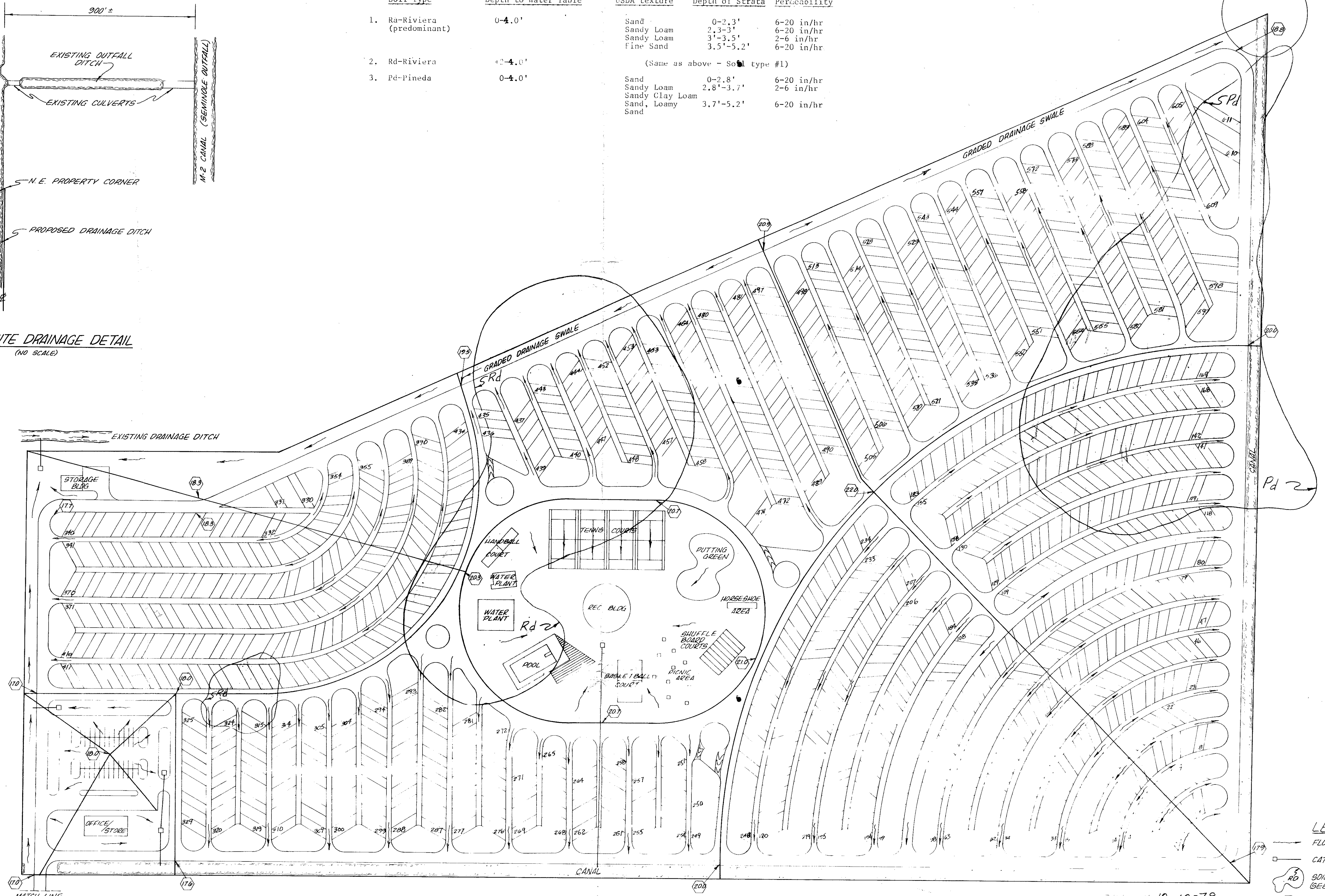
The following is a listing of the type of soil encountered on this site (ref: "Soil Survey of Palm Beach County Area, Florida," USDA Soil Conserv. Service, issued Dec., 1978.) along with the depth of strata & Permeability:

Soil Type	Depth to Water Table	USDA texture	Depth of Strata	Permeability
1. Ra-Riviera (predominant)	0-4.0'	Sand Sandy Loam Sandy Loam Fine Sand	0-2.3' 2.3-3' 3'-3.5' 3.5'-5.2'	6-20 in/hr 6-20 in/hr 2-6 in/hr 6-20 in/hr
2. Rd-Riviera	0-4.0'	(Same as above - Soil type #1)		
3. Pd-Pineda	0-4.0'	Sand Sandy Loam Sandy Clay Loam Sand, Loamy Sand	0-2.8' 2.8'-3.7' 3.7'-5.2'	6-20 in/hr 2-6 in/hr 6-20 in/hr

SEE OFF-SITE DRAINAGE DETAIL



OFF-SITE DRAINAGE DETAIL
(NO SCALE)



TO STATE ROAD #20
(SOUTHERN BLVD)

- LEGEND**
- FLOW ARROW
 - CATCH BASIN & PIPE
 - ⊞ SOIL TYPE LIMITS (SEE CLASSIFICATIONS ABOVE)
 - ① PROPOSED ELEVATION
 - ASPHALT SWALE

Engineering Dept. *Robert Smith*
 Earth Dept. *Michael Land*
 Planning, Surveying & Blng. Dept. *DAVID CORRODENT*
 Surveying, Planning & Blng. Dept. *Richard G. Sordano*

mh0023.igr
 LION COUNTRY SAFARI RVP
 PET 77-178, EXH 21, SHEET 20F 2

DC	DANIEL CARNAHAN CONSULTING ENGINEERS, Inc.	DATE	BY	CK'D	REVISION	1" = 100'	LION COUNTRY SAFARI R.V. PARK MASTER DRAINAGE PLAN
	CONSULTING ENGINEERS LAND SURVEYORS LAND DEVELOPMENT CONSULTANTS					8-28-79 SIMMONS EFL.	
550 N. STATE ROAD 7 (4th FLOOR)	MARGATE, FLORIDA 33063	(305) 972-3959			SEAL	FILE NO. 7907038	SHEET 2 OF 2 <i>Site Plan for Phase I Lion Country Safari</i>